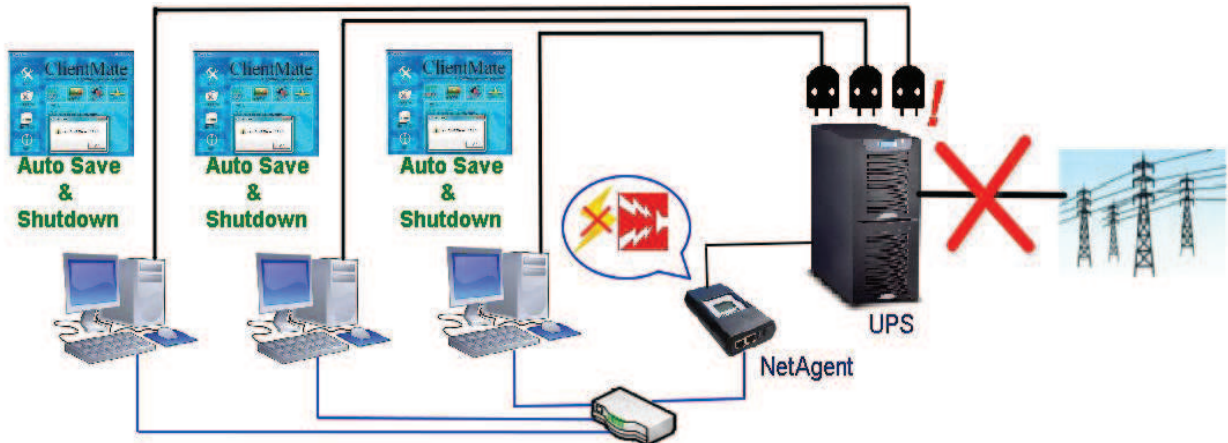


## Chapter 6. ClientMate

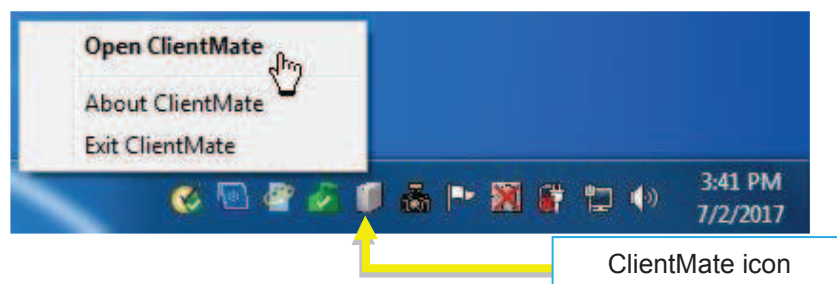
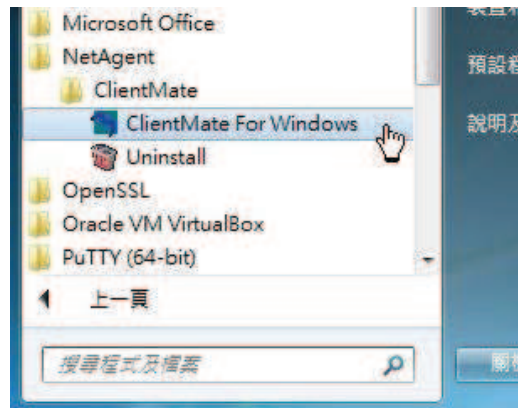
ClientMate is shutdown software for PC that connects with NetAgent. This utility is for the Windows platform. When the ClientMate gets the power failure signal from the NetAgent. The ClientMate will save the files and shutdown the system gracefully. When the hardware installation of the NetAgent has been completed, install the ClientMate on any of the Windows system on the network. When ClientMate detects AC Fail, Battery Low, Schedule Shutdown signals from the NetAgent, it will save the file and shutdown the system gracefully to avoid system crash.



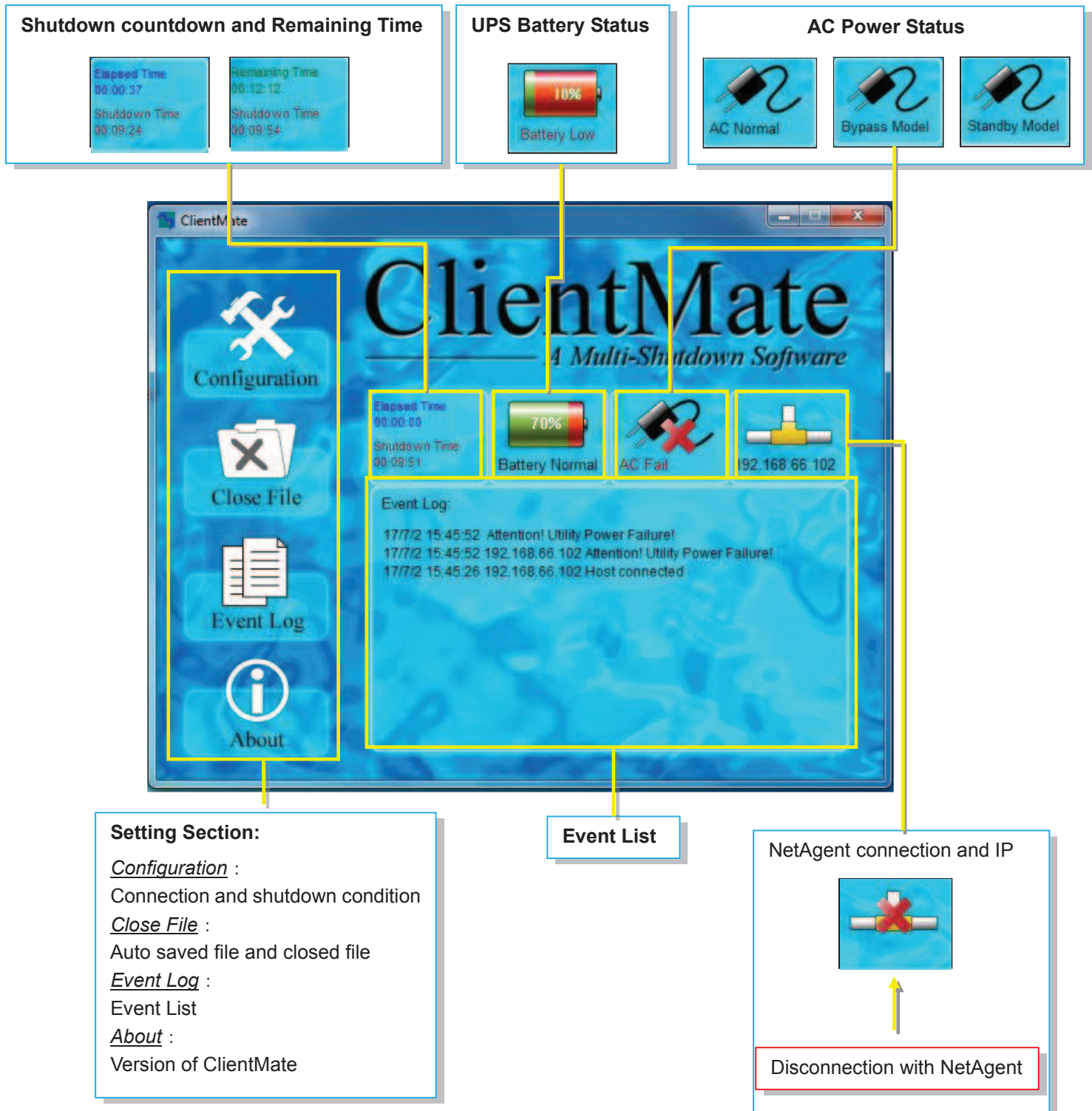
### Installation and setup

ClientMate software is available in the CD provided with NetAgent. After installed, it save under directory of

All Program > NetAgent > ClientMate > ClientMate for Windows



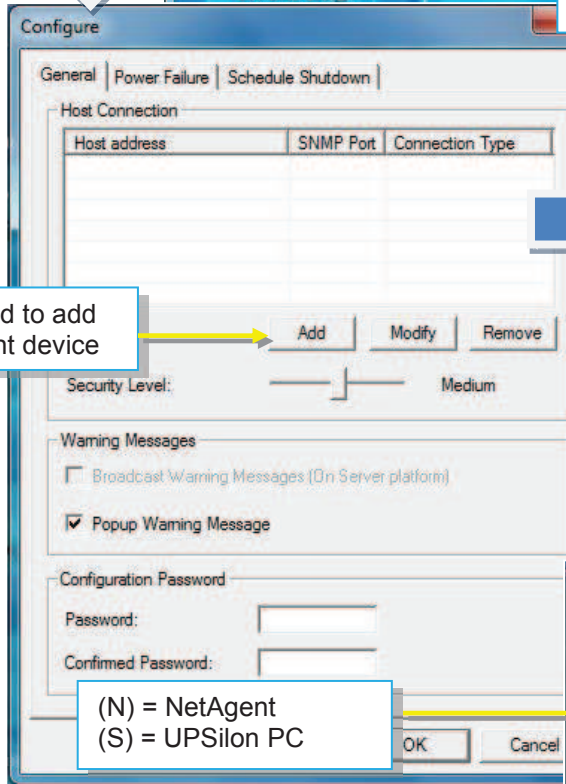
## Operation Interface



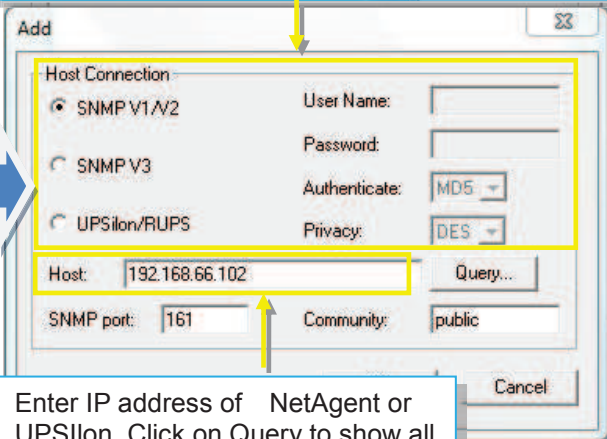
## Configuration



To select connection via SNMP or UPSilon. If SNMPV3 , username/password, Authenticate, privacy are required

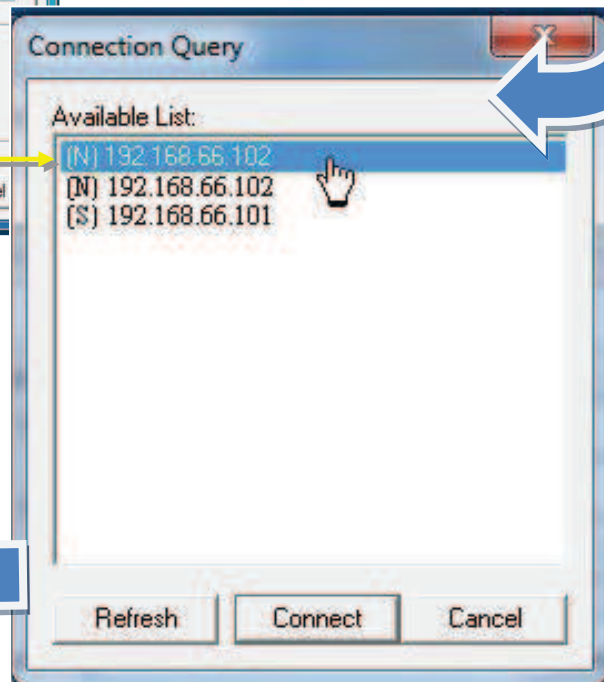


Click Add to add NetAgent device

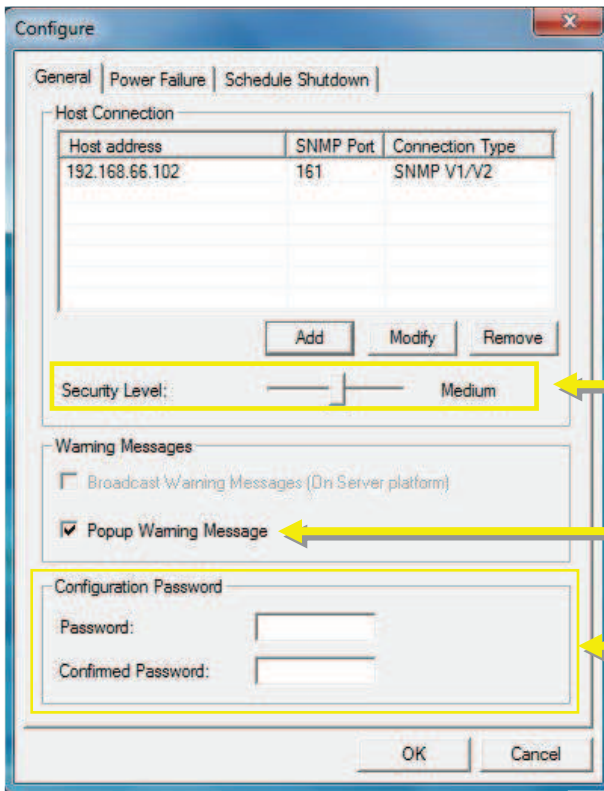


Enter IP address of NetAgent or UPSilon. Click on Query to show all available NetAgent

(N) = NetAgent  
(S) = UPSilon PC







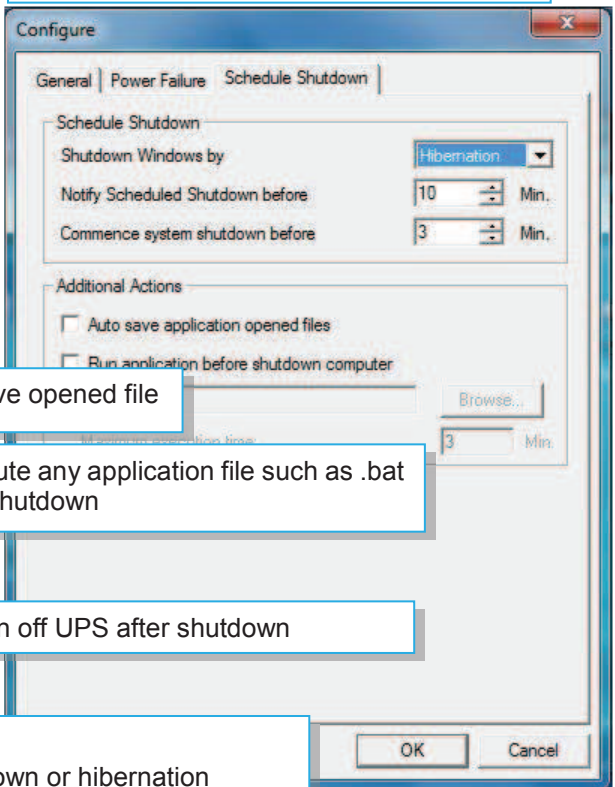
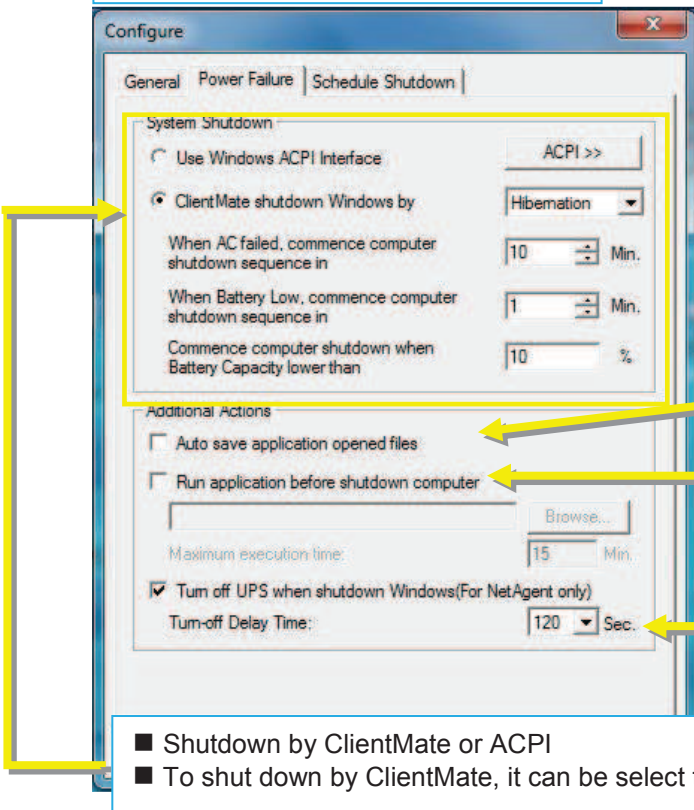
If connect with multi NetAgent, shutdown condition can be perform by security level.  
 Low : All NetAgent with AC failure condition  
 Medium : 50% NetAgent device has AC failure condition  
 High : AC failure from any/single NetAgent would shutdown

If to have pop warning message

If password is required for any configuration change

**Power Failure/Shutdown Condition**

**Shutdown by Scheduling**

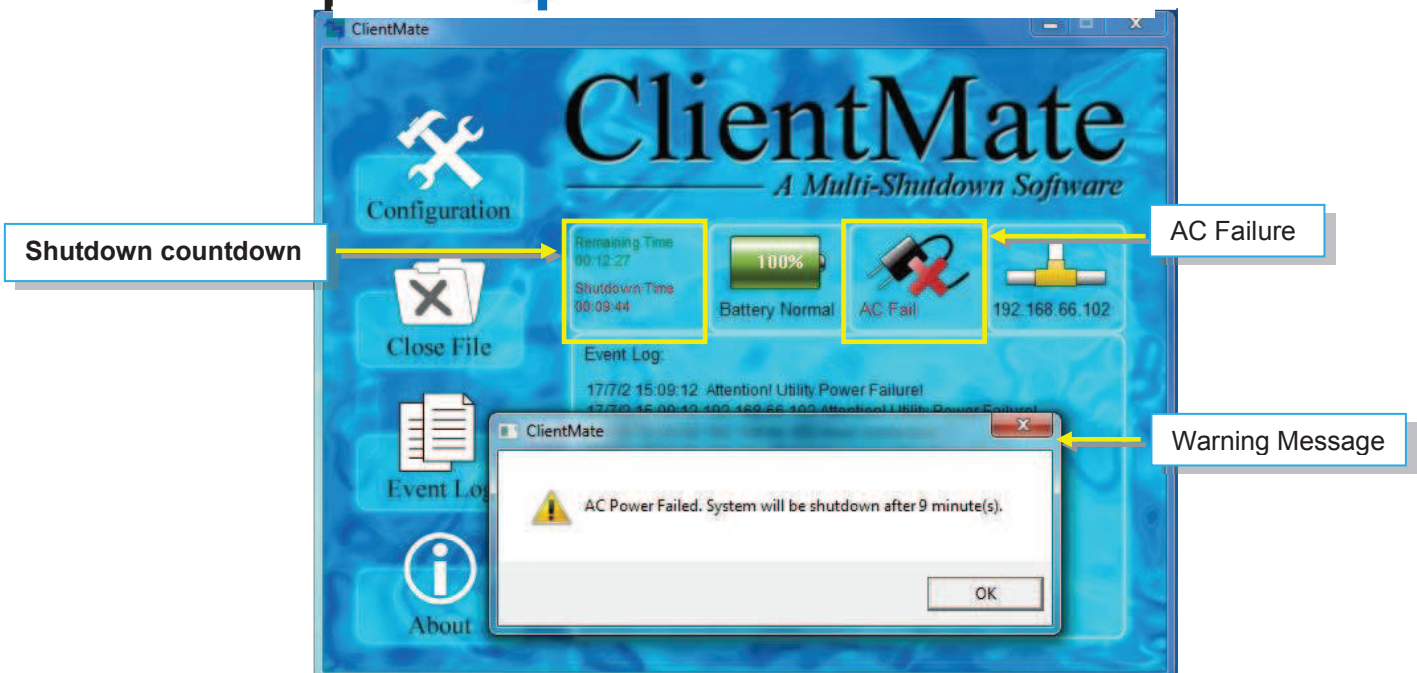
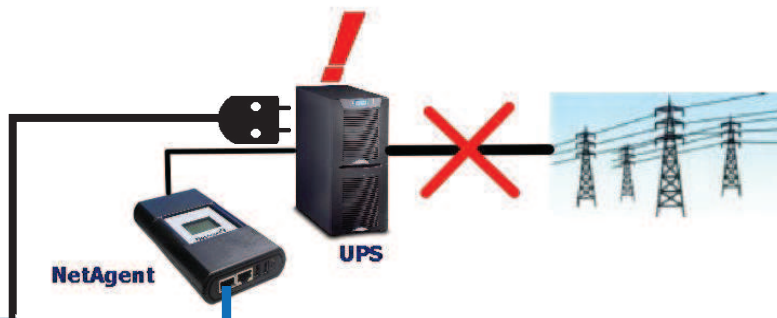
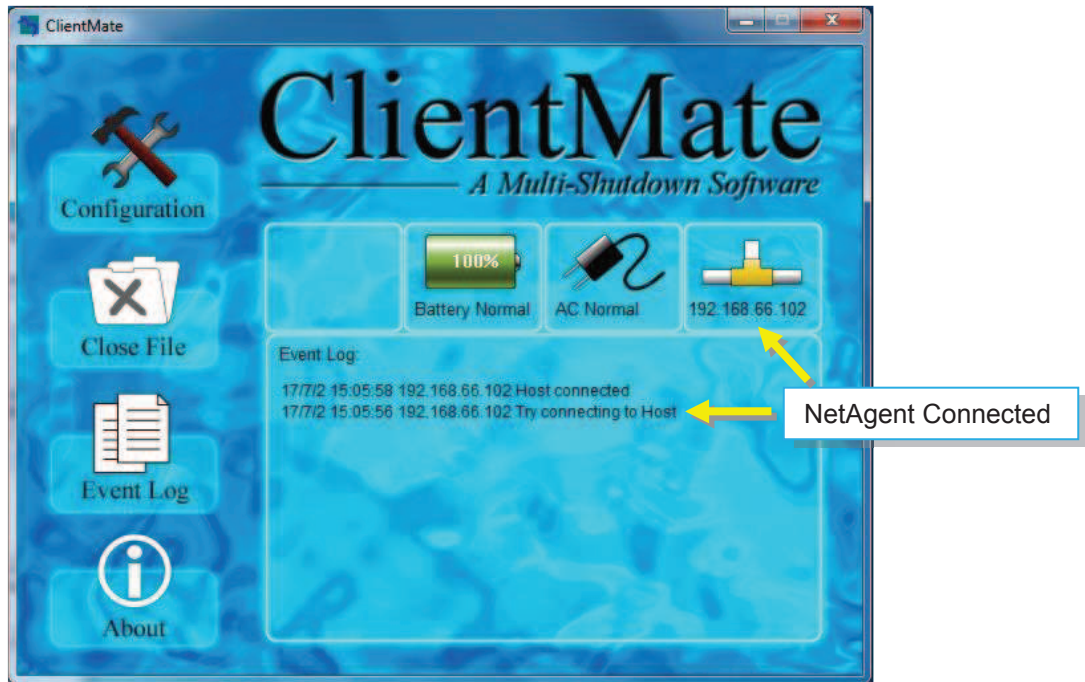


Auto save opened file

To execute any application file such as .bat before shutdown

To turn off UPS after shutdown

- Shutdown by ClientMate or ACPI
- To shut down by ClientMate, it can be select to be shut down or hibernation



## Close File

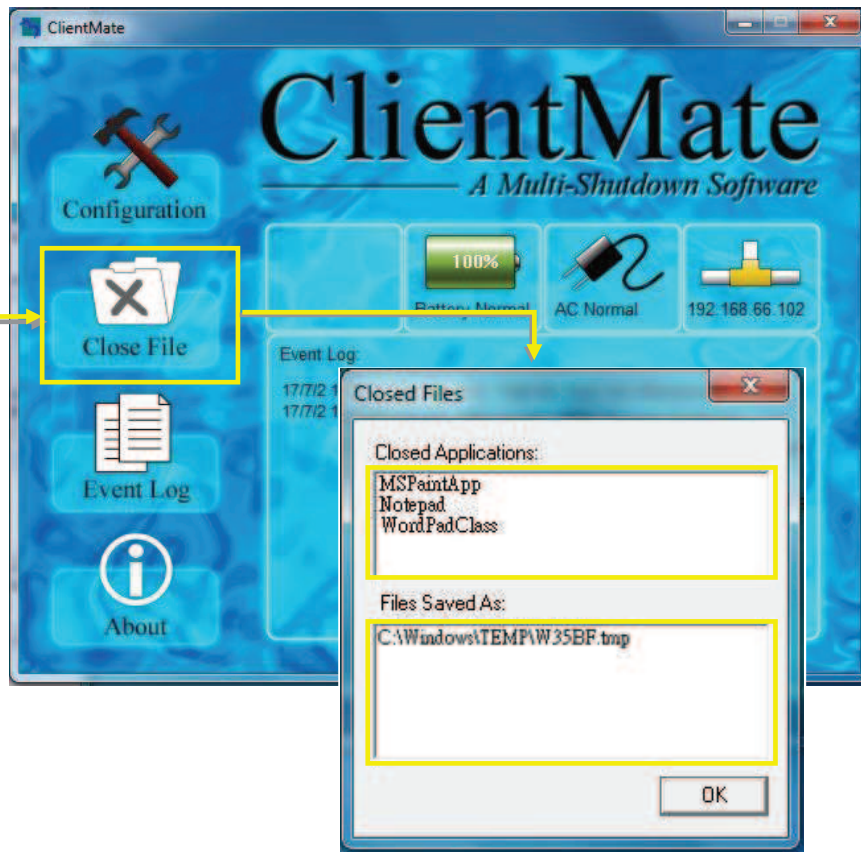


If select to auto save file before shutdown, ClientMate will save the file and file can be check from Closed File





Closed Application or  
Files Saved As



## Event Log

The screenshot shows the ClientMate software interface. On the left sidebar, the 'Event Log' button is highlighted with a yellow box. A callout box labeled 'Check Event log' has an arrow pointing to this button. Another yellow arrow points from the 'Event Log' button to the 'Event Log' window that is open in the foreground. The main interface displays 'ClientMate - A Multi-Shutdown Software' with status indicators for Battery Normal (100%), AC Normal, and Host address 192.168.66.102. The Event Log window shows the following data:

Date	Time	Host address	Description
2017/07/02	15:17:06		Attention! Utility Power Fe
2017/07/02	15:17:03	192.168.66.102	Attention! Utility Power Fe
2017/07/02	15:13:03		Battery Restored
2017/07/02	15:13:00	192.168.66.102	Battery Restored
2017/07/02	15:11:41		Attention! UPS Battery Lc
2017/07/02	15:11:38	192.168.66.102	Attention! UPS Battery Lc
2017/07/02	15:10:19		AC Restored
2017/07/02	15:10:16	192.168.66.102	AC Restored
2017/07/02	15:09:12		Attention! Utility Power Fe
2017/07/02	15:09:12	192.168.66.102	Attention! Utility Power Fe
2017/07/02	15:05:58	192.168.66.102	Host connected
2017/07/02	15:05:56	192.168.66.102	Try connecting to Host

## About

The screenshot shows the ClientMate software interface. On the left sidebar, the 'About' button is highlighted with a yellow box. A callout box labeled 'Check ClientMate version' has an arrow pointing to this button. Another yellow arrow points from the 'About' button to the '關於' (About) dialog box that is open in the foreground. The main interface displays 'ClientMate - A Multi-Shutdown Software' with status indicators for Battery Normal (100%), AC Normal, and Host address 192.168.66.102. The Event Log window shows the same data as in the previous screenshot.

關於

ClientMate 版本 5.62  
Mega System Technologies, Inc.  
版權 (C) 2012

確定